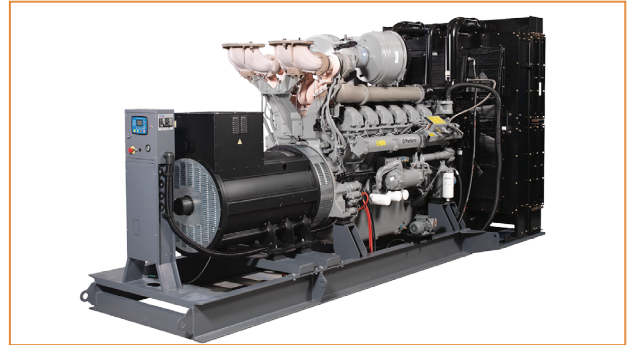


## PERKINS 1375-1880 kVA Technical Specifications



### ENGINE

- PERKINS series heavy duty diesel engine
- 4 cycle, water cooled, turbocharged & air to air charge cooled / turbocharged & air to water charge cooled
- Direct injection
- Electronic governor system
- 24 volt self-starter and charger alternator
- Changeable air, fuel and oil filter
- Tropical type radiator
- Flexible fuel pipe
- Oil discharge valve and extension pipe
- Industrial type silencer, exhaust spiral or compensator
- Maintenance free battery
- Engine block water heater (in automatic models)
- Diesel gen-set maintenance and operating instructions and electrical circuit diagram

### QUALITY STANDARD

Our gen-sets; VDE 0530, BS 4999, BS 5000, IEC 34, TS ISO 8528, TS EN 12601 are manufactured in accordance with the requirements of standards above. Our company fulfills ISO 9001:2008, ISO 14001:2004, OHSAS 18001:2007 management system requirements, and have the accredited certificates of Kiwa & MEYER. Also we've GOST-R certificate. Our gen-sets have TS ISO 8528-5, TS EN 12601 product standard certificates. Our gen-sets are CE certified in accordance with the requirements of 2000/14/EC, noise emission directive.

### ALTERNATOR

- INFINITY brushless 12 ends alternator
- Single bearing, flexible disc 4 poles alternator for harmonic failure
- H type isolation class
- IP 21-23 protection class, Self-excited
- Electronic automatic voltage regulator
- Stator 2/3 step for harmonic failure
- Leroy Somer, Stamford, SINCRO and Mecc Alte alternators are optional

### EXTRA EQUIPMENTS

- Charge ammeter
- Molded case circuit breaker (in automatic models)
- Hospital (critical) type silencer
- Sound-proof canopy
- Mobile - trailer
- Synchronization control panel for 2-6 gensets.
- 4 pole automatic transfer panel (A.T.S.)
- Fuel and oil heater
- Alternator heater
- Automatic fuel filling system
- Fuel-water separator filter

### CANOPY

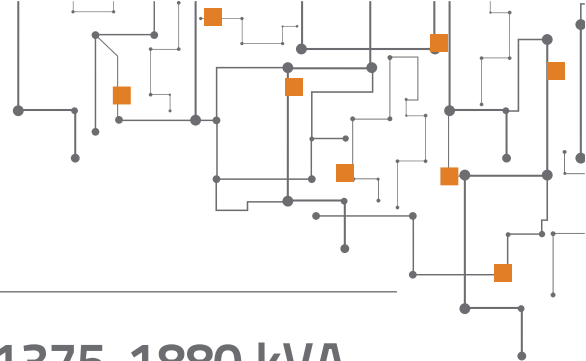
- Modular type sound-proof canopy
- Canopy installation executed with screw and nut, without welding process
- Epoxy and polyester powder painted canopy
- Canopy designed for easy maintenance
- Lockable doors on both sides of canopy
- Emergency stop button
- Transparent panel inspection window

### AUTOMATIC CONTROL PANEL

- LCD display screen
- Battery charger
- Hardware and materials needed
- USB port & RS-485 output

### GEN-SET SAFETY PROTECTION & ALARMS

- High water temperature
- Low oil pressure
- High & low engine speed
- Low radiator water level
- Over current load
- High & low genset voltage
- Start/stop failure



## PERKINS Series Diesel Generator Sets 1375-1880 kVA

MODEL				IPG1375P	IPG1385P	IPG1500P	IPG1650P	IPG1880P		
GROUP	GEN - SET POWER	STAND BY	kVA	1375	1385	1500	1656	1880		
			kW	1100	1108	1200	1325	1504		
		PRIME	kVA	1250	1250	1364	1505	1710		
			kW	1000	1000	1092	1204	1368		
	CANOPY DIMENSION (W x L x H) mm				N/A	N/A	N/A	N/A	N/A	
	CANOPY WEIGHT kg				N/A	N/A	N/A	N/A	N/A	
	OPEN DIMENSION (W x L x H) mm				2160 x 5200 x 2830	2160 x 5200 x 2830	2160 x 5200 x 2830	2160 x 5200 x 2830	2160 x 5200 x 2830	
	OPEN WEIGHT kg				9080	9080	9080	10453	10784	
ENGINE	BRAND				PERKINS	PERKINS	PERKINS	PERKINS	PERKINS	
	TYPE				4012 - 46TAG0A	4012 - 46TWG2A	4012 - 46TWG3A	4012 - 46TAG2A	4012 - 46TAG3A	
	POWER	STAND BY	kW	1158	1166	1263	1395	1583		
			PRIME	kW	1053	1055	1149	1267	1440	
	SPEED (rpm)				1500	1500	1500	1500	1500	
	CYCLE				4	4	4	4	4	
	DISPLACEMENT (lt)				45,842	45,842	45,842	45,842	45,842	
	NUMBER OF CYLINDERS				12 - 60° V	12 - 60° V	12 - 60° V	12 - 60° V	12 - 60° V	
	BORE AND STROKE (mm x mm)				160 x 190	160 x 190	160 x 190	160 x 190	160 x 190	
	COMPRESSION RATIO				13,6:1	13,6:1	13,6:1	13,6:1	13,6:1	
	GOVERNOR TYPE				ELECTRONIC					
	INDUCTION				TURBOCHARGED - AIR TO AIR CHARGE COOLED	TURBOCHARGED - AIR TO WATER CHARGE COOLED		TURBOCHARGED - AIR TO AIR CHARGE COOLED		
	COMBUSTION SYSTEM				DIRECT INJECTION					
	COOLING SYSTEM				WATER					
	FUEL CONSUMPTION (lt/h)	100% OF PRIME POWER			259,00	259,00	283,00	310,00	370,00	
		75% OF PRIME POWER			199,00	196,00	213,00	234,00	275,00	
50% OF PRIME POWER			139,00	143,00	151,00	157,00	187,00			
TOTAL LUBRICATION SYSTEM CAPACITY (lt)				177	177	177	177	177		

INFINITYPOWER reserves the right to make changes in model, technical specifications, color, equipment & accessories without prior notice.