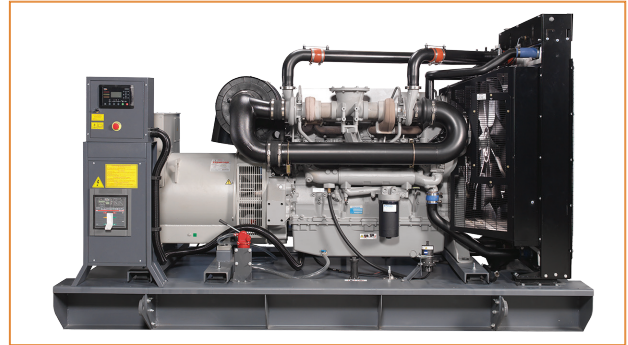


PERKINS 630-700 kVA Technical Specifications



ENGINE

- PERKINS series heavy duty diesel engine
- 4 cycle, water cooled, turbocharged & air to air charge cooled
- Direct injection
- Electronic governor system
- 24 volt self-starter and charger alternator
- Changeable air, fuel and oil filter
- Tropical type radiator
- Flexible fuel pipe
- Oil discharge valve and extension pipe
- Industrial type silencer, exhaust spiral or compensator
- Maintenance free battery
- Engine block water heater (in automatic models)
- Diesel gen-set maintenance and operating instructions and electrical circuit diagram

QUALITY STANDARD

Our gen-sets; VDE 0530, BS 4999, BS 5000, IEC 34, TS ISO 8528, TS EN 12601 are manufactured in accordance with the requirements of standards above. Our company fulfills ISO 9001:2008, ISO 14001:2004, OHSAS 18001:2007 management system requirements, and have the accredited certificates of Kiwa & MEYER. Also we've GOST-R certificate. Our gen-sets have TS ISO 8528-5, TS EN 12601 product standard certificates. Our gen-sets are CE certified in accordance with the requirements of 2000/14/EC, noise emission directive.

ALTERNATOR

- INFINITY brushless 12 ends alternator
- Single bearing, flexible disc 4 poles alternator for harmonic failure
- H type isolation class
- IP 21-23 protection class, Self-excited
- Electronic automatic voltage regulator
- Stator 2/3 step for harmonic failure
- Leroy Somer, Stamford, SINCRO and Mecc Alte alternators are optional

EXTRA EQUIPMENTS

- Charge ammeter
- Molded case circuit breaker (in automatic models)
- Hospital (critical) type silencer
- Sound-proof canopy
- Mobile - trailer
- Synchronization control panel for 2-6 gensets.
- 4 pole automatic transfer panel (A.T.S.)
- Fuel and oil heater
- Alternator heater
- Automatic fuel filling system
- Fuel-water separator filter

CANOPY

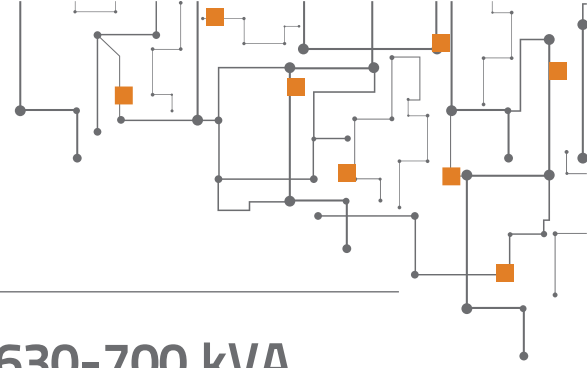
- Modular type sound-proof canopy
- Canopy installation executed with screw and nut, without welding process
- Epoxy and polyester powder painted canopy
- Canopy designed for easy maintenance
- Lockable doors on both sides of canopy
- Emergency stop button
- Transparent panel inspection window

AUTOMATIC CONTROL PANEL

- LCD display screen
- Battery charger
- Hardware and materials needed
- USB port & RS-485 output

GEN-SET SAFETY PROTECTION & ALARMS

- High water temperature
- Low oil pressure
- High & low engine speed
- Low radiator water level
- Over current load
- High & low genset voltage
- Start/stop failure



PERKINS Series Diesel Generator Sets 630-700 kVA

MODEL				IPG630P	IPG650P	IPG700P	
GROUP	GEN - SET POWER	STAND BY	kVA	630	650	700	
			kW	504	520	560	
		PRIME	kVA	591	591	650	
			kW	472,8	472,8	520	
	CANOPY DIMENSION (W x L x H) mm				1700 x 4400 x 2750	1700 x 4400 x 2750	1700 x 4400 x 2750
	CANOPY WEIGHT kg				4900	4900	5100
	OPEN DIMENSION (W x L x H) mm				1600 x 3740 x 2180	1600 x 3740 x 2180	1600 x 3740 x 2180
	OPEN WEIGHT kg				4200	4200	4400
ENGINE	BRAND			PERKINS	PERKINS	PERKINS	
	TYPE			2806C - E18TAG1A	2806C - E18TAG1A	2806A - E18TAG2	
	POWER	STAND BY	kW	565	565	609	
		PRIME	kW	514	514	565	
	SPEED (rpm)			1500	1500	1500	
	CYCLE			4	4	4	
	DISPLACEMENT (lt)			18,1	18,1	18,1	
	NUMBER OF CYLINDERS			6 IN LINE	6 IN LINE	6 IN LINE	
	BORE AND STROKE (mm x mm)			145 x 183	145 x 183	145 x 183	
	COMPRESSION RATIO			14,5 : 1	14,5 : 1	14,5 : 1	
	GOVERNOR TYPE			ELECTRONIC			
	INDUCTION			TURBOCHARGED - AIR TO AIR CHARGE COOLED			
	COMBUSTION SYSTEM			DIRECT INJECTION			
	COOLING SYSTEM			WATER			
	FUEL CONSUMPTION (lt/h)	100% OF PRIME POWER		126,00	126,00	132,00	
		75% OF PRIME POWER		96,00	96,00	97,00	
50% OF PRIME POWER		63,00	63,00	66,00			
TOTAL LUBRICATION SYSTEM CAPACITY (lt)			62	62	62		

INFINITYPOWER reserves the right to make changes in model, technical specifications, color, equipment & accessories without prior notice.