

MONITOR

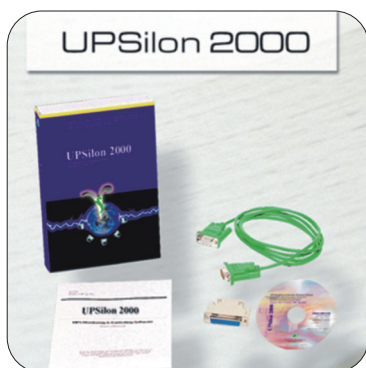
Software



RUPS2000

RUPS 2000 is a UPS monitoring and controlling software that continuously checks the status of system AC power and UPS battery condition both of local and network UPS. Combined with ClientMate, RUPS 2000 could be as a server software, and let the Clientmate get UPS status from RUPS 2000. In the event of any abnormal condition, RUPS 2000 will send out warning message to inform user and even shut down the system after a pre-setting delay time after power failure. In using RUPS 2000, there will be no distance problem and makes work efficient. When any power event occurred, RUPS 2000 will do automatic files saving, system shut down, and also send email, pager notification. User will no longer have problems with the system and date on system power failure.

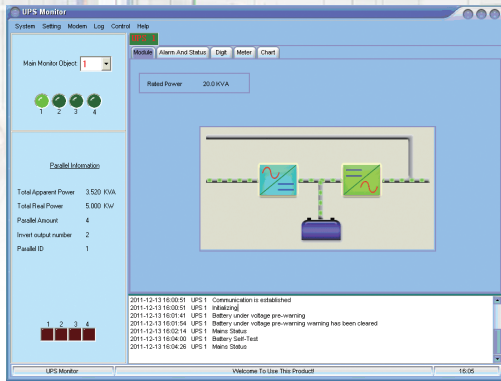
Furthermore, RUPS 2000 supports Windows NT Service function, RUPS 2000 will be enable when Windows NT boot up even if there is no users login the server. Design for contact closure interface UPS, monitoring power failure and low battery
Supported OS: Novell Netware, DOS, WINDOWS 3.x/9x/NT.



UPSilon 2000

UPSilon 2000 is a monitoring and controlling software for smart UPS with RS232. When the power is normal, UPSilon 2000 will display real UPS status in analog diagram display. It can also monitor remote UPS with the use of the intranet/internet. Combined with ClientMate, UPSilon 2000 could be a server software, and let ClientMate get UPS status from UPSilon 2000, therefore, there will be no distance-problem and makes work efficient. When any power event occurred, UPSilon 2000 can do automatic files saving, systems shutdown, and also send email, pager notification. User will no longer have problems with the system and data on system power failure.

Furthermore, UPSilon 2000 has also the Windows Service Function, UPSilon 2000 will be enable when Windows NT boot up even if no users login the server. ClientMate supports RUPS 2000, UPSilon 2000 and SNMP Agent, as a workstation software it is able to auto detect host in network, and monitor main UPS status. In the floating status/alert display, user could real-time monitor server UPS, in case of any power event, ClientMate will auto save files and safely shutdown operating system. In the internet world, it is more necessary to have 24-hours system protection, data and nessage receiving. The strong features of UPSilon 2000 and ClientMate will become the best solution for your UPS Supported OS: Novell Netware 3X, 4X, 5X, WINDOWS 9x/NT/2000/Vista.



Muser1000 is a monitoring and controlling software for the type of YDC(three phase of input and output,one phase of input and output) UPS.

Supported OS: Microsoft Windows 98/ 2000/ NT / Me / XP.
Method of Communication: serial communication.

The function of Muser1000:

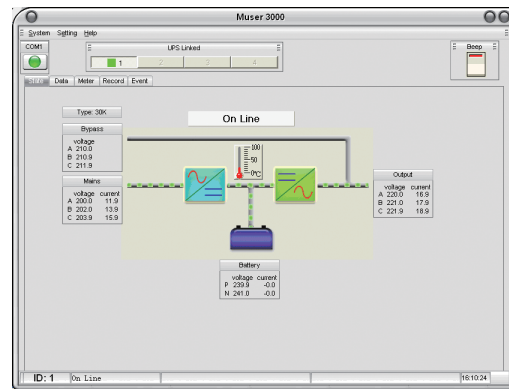
- Display real UPS Status in analog diagram display and display by Chinese or English.
- Set UPS rating parameter, turn on/off UPS and make the battery self-testing.
- Support both LCD and monitor card.
- Do automatic files of event and real data of UPS recording,export all events or data of log.
- Set the computer is dormancy or not when the battery is low.
- Monitor remote UPS with the use of Modem.

Muser3000 is a monitoring and controlling software for the type of Hipower (three phase of input and output) UPS.

Supported OS: Microsoft Windows 98/ 2000/ NT / Me / XP.
Method of Communication: serial communication.

The function of Muser3000:

- Display real UPS Status in analog diagram display and display by Chinese or English.
- Set UPS rating parameter, turn on/off UPS and make the battery self-testing.
- Do automatic files of event and real data of UPS recording,export all events or data of log.



Muser4000 is a monitoring and controlling software for the High Power UPS and Modularization UPS.

Supported OS: Microsoft Windows 98/ 2000/ NT / Me / XP.
Method of Communication: serial communication.

The function of Muser4000:

- Display real UPS Status in analog diagram display and display by Chinese or English.
- Set UPS rating parameter and make the battery self-testing.
- Do automatic files of event and real data of UPS recording,export all events or data of log.